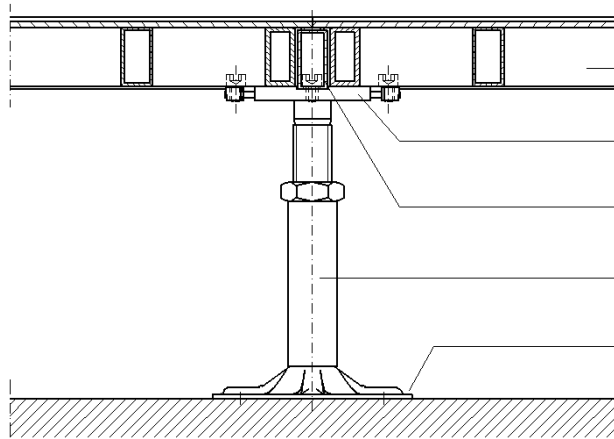


Technical Data Sheet - Type 3 Dynamic



1. Floor panel (with Floor covering or without Floor covering)
2. Gasket
3. Profile Dynamic
4. Pedestal /type of construction acc. to floor height
5. Pedestal base plate glued to the sub floor (dowelled on request)

Panel:

Dimension: 600 x 600 mm
 Panel thickness: ~ 28 - 49 mm
 System weight: ~ 48 - 67 kg/m²
 (without covering, floor height 250 mm)
 Panel weight: ~ 14 - 24 kg/piece
 Panel material: Steel construction;
 conductive powder coated

Understructure:

Module: 600 x 600 mm
 Pedestal material: Galvanized steel pedestals, glued to the sub floor,
 profiles screwed with pedestal heads
 Construction height: ~ 70 – 1800 mm FFH
 (without floor covering)

Load values:

Point load: 5.000 N – 25.000 N
 acc. to DIN EN 12825: class 2 – 6
 Ultimate load: ≥ 10.000 N – 50.000 N
 Safety factor: ≥ 2,0

Diameter of holes:

Standard module Different diameters possible up to 40%

Electrostatic:

> 10⁵ Ohm (Depending on systems and floor covering)

Fire protection:

Building material class acc. to
 DIN 4102 T1 A1

**Thermal conductivity
 (base material)**

~ 50 W/mk